

Pharmacology Discovery Services

Your Best *In Vivo* Partner to Establish Pre-Clinical Proof-of-Concept

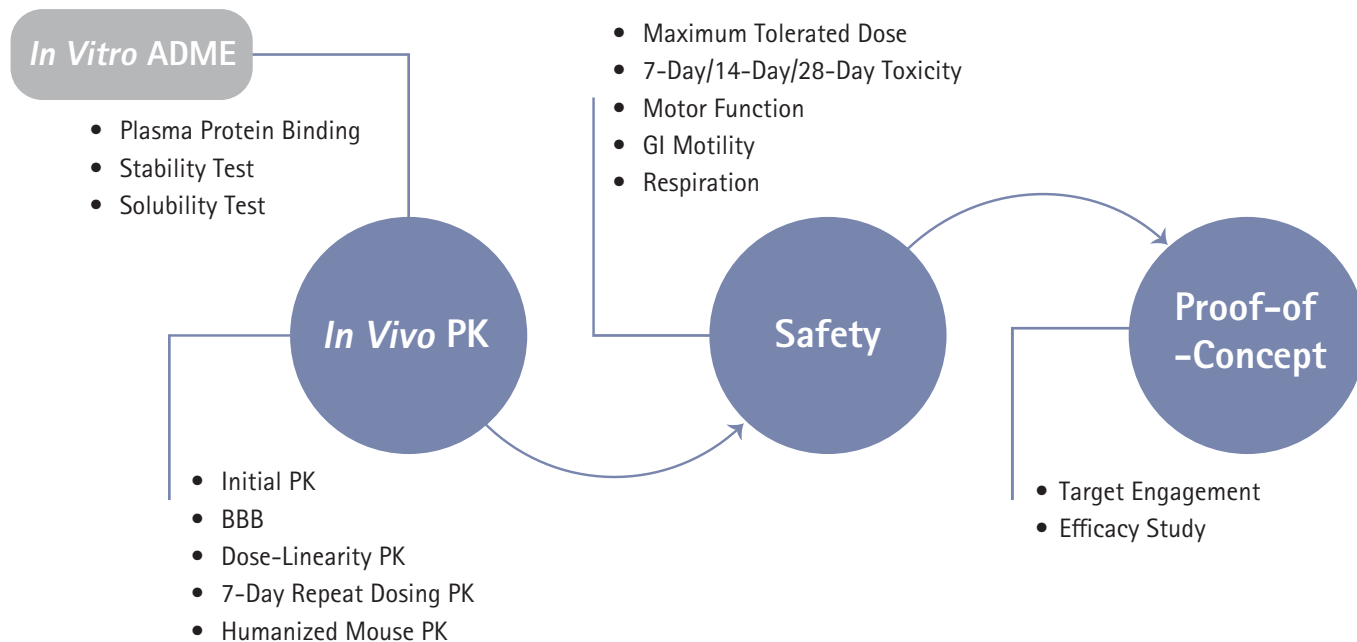
Pharmacology Discovery Services (PDS) is a contract research organization (CRO) specializing in *in vivo* pharmacology, located in Taipei, Taiwan. As a trusted partner in drug discovery and development, PDS offers a comprehensive portfolio of non-GLP efficacy testing, pharmacokinetics, and rodent tolerability. These studies are conducted in accordance with [AAALAC/OLAW/2010/63/EU directive](#) and [ISO 9001:2015](#) standard.

PDS effectively provides proof-of-concept data of your compounds. With the support of our expert team of technical directors and a collection of 350+ validated disease efficacy models across six therapeutic areas: antimicrobial, inflammation/allergy, oncology, behavior and CNS, metabolic, and gastrointestinal(GI)/renal, we are dedicated to providing flexible and collaborative custom programs tailored to meet your specific needs.

With 50+ Years of Experience

We accelerate your *in vivo* target selection and lead discovery across various therapeutic areas by expert guidance in model recommendation and study design, reliable testing systems, robust data generation and delivery, and result interpretations.

In Vivo Workflow



We provide continuous support throughout the project to maximize the chances of success, prioritizing smooth communication with our clients to ensure a seamless process from start to finish.



Therapeutic Area Models Available

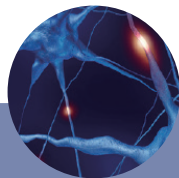
"350+ Validated Models"



ANTIMICROBIAL

145+ validated models

CDC/WHO priority pathogens | *In vitro* antimicrobial assays | *In vivo* rodent infection models



CNS/PAIN

50+ validated models

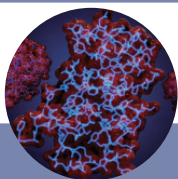
Pain | Depression | Anxiety | Seizure
| Tolerability



GI/RENAL

20+ validated models

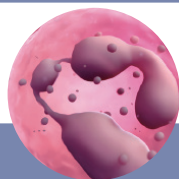
Gastric acidity, irritation, ulceration,
and motility | AKI | 5/6 SNx



INFLAMMATION/ALLERGY

60+ validated models

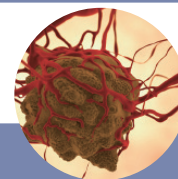
Autoimmune | Dermal inflammation
| Lung inflammation | Liver injury
and fibrosis | NASH | Colitis |
Sepsis | Gout



METABOLIC

20+ validated models

Diabetes | Obesity |
Intake monitoring



ONCOLOGY

65+ validated models

Human cell-line derived xenograft
(CDX) models | Murine syngeneic
models | Orthotopic models |
Humanized mouse models

Facility and Capabilities

1669 m² vivarium | Biosafety level 2 facility | 3,000+ rodent holding | 20 procedure rooms | 186 m² bioanalytical lab | 45+ FTEs

Test Article Experience

Small molecules | Biologics | Bacteriophage | Vaccines | RNAi | Nucleic acids | Liposomal formulations | Nanoparticles | Exosomes

Formulation and Dosing Options

- Common routes of administration: ID, ICV, IM, IP, IT, IV, PO, SC, Intra tumoral, Topical, Vaginal
- Short and long-term continuous IV infusion
- Adjustable dose schedule: q2wk, qwk, biw, tiw, qod, qd, bid, tid, qid
- Formulation optimization services

Species

Mouse | Rat | Guinea pig | Hamster

Custom Model Development

- Consultative development of custom models with wild-type or genetically modified models
- Customized cell engineering and labeling for specialized models

Supplemental Ex Vivo Analyses

ELISA | Flow cytometry | Fluorescence/bioluminescence *in vivo* imaging | Hematology and blood chemistry | Histopathology | Luminex | Necropsy | PK bioanalysis | RT-qPCR | Western blot

Pharmacology Discovery Services Taiwan, Ltd.

25, Wugong 6th Road, Wugu District
New Taipei City, Taiwan 24891
Office Phone: +886-2-7751-7100
Fax Number: +886-2-2299-9370

Contact Us

NA | AnthonyGallacher@eurofinsUS.com
EU | Ian.Robinson@Discovery.EurofinsEU.com
APAC | Katherine.Liao@eurofinsasia.com

pharmacologydiscoveryservices.com

